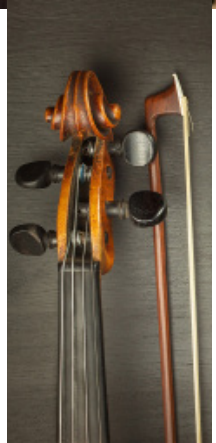
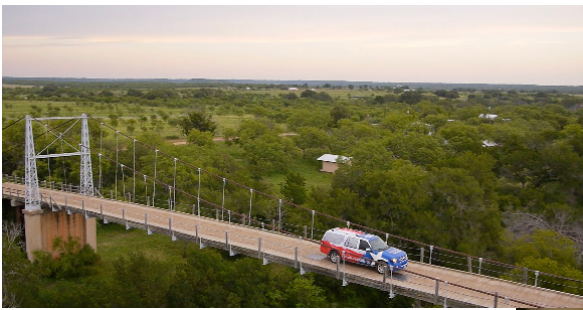


Celebrating our 50th Anniversary Season

TEXAS COUNTRY REPORTER "A TEXAS TRIBUTE"

Exclusive Live Concert Tour
Fall 2021 - Fall 2022





A TEXAS TRIBUTE

Celebrating our 50th Anniversary Season

INTRODUCTION

“A Texas Tribute” is an exclusive, live concert tour coinciding with the 50th anniversary season of Texas Country Reporter (2021-2022). Full of Texas tunes and featuring live narration by Bob & Kelli Phillips, this flexible package lets your orchestra (or professional level band) present a unique concert or fundraising event with a direct, personal connection to the longest-running independent TV show in American history.

Narrated chapters on Texas history, culture, and humor are accompanied by an original live orchestral underscore - similar in approach to Copland’s “Lincoln Portrait.” These chapters — mixed with suggested Texas-themed arrangements or your own program choices — give you flexibility to build an event around your ensemble and your audience. Bob & Kelli will also appear pre- or post-concert to make the night truly memorable for your organization’s strongest supporters. The tour and its participating groups will be heavily publicized each week on Texas Country Reporter.

- > 49 years on TV
- > Weekly reach: 670k homes
- > Airs in every city in Texas
- > Airs nationally on RFD-TV

Since its beginning in 1972, the program has received dozens of Emmy Awards, Telly Awards, and honors from numerous state and non-profit organizations.





A TEXAS TRIBUTE

Celebrating our 50th Anniversary Season

ORCHESTRATION



The concept for “A Texas Tribute” has been developed in partnership with The Dallas Winds, who have suggested musical selections for the evening. Texas composer, publisher, and Dallas Winds Staff Arranger David Lovrien has composed original music that will underscore the narrated portions of the event. This turnkey kit is **flexible** to suit the needs of your own group, and we look forward to the unique character that each performance will have.



(2-2-2-2+b.cl., 4-2-2-1, timpani, bells, perc., harp, strings)

2 flute, 2 clarinet, bass clarinet, 2 bassoons

4 horn, 2 trumpet, 2 trombone, tuba

Timpani, bells, tambourine, cymbals, snare drum

Harp

Strings



A TEXAS TRIBUTE

Celebrating our 50th Anniversary Season

SAMPLE SHOW 1 (FULL CONCERT)

1st Half (43 minutes)

Bob & Kelli introduced (2'00")

Walk-on (Music: Texas Country Reporter theme)

Opening welcome remarks (3'00")

Narrated: Texas Revolution (7'30")

Texas Declaration of Independence, Sam Houston speech,
letters from the Alamo

(Music: Texas Revolution cues, Plano Fanfare)

ORCHESTRA: TBD

Narrated: Texas Constitutions (3'00")

(Music: Texas Constitutions cues)

ORCHESTRA: Texas, Our Texas (5'30")

arr. David Lovrien (provided in package)

Narrated: Cowboy Life Part 1 (1'00")

(Music: cues)

ORCHESTRA: Overture to "The Cowboys" (9'30")

John Williams

-Intermission-

2nd Half (49 minutes)

ORCHESTRA: Suite from "The Plow That Broke The
Plains" (14'00")

Virgil Thomson

ORCHESTRA: Hoedown from "Rodeo" (3'30")

Aaron Copland. Sheet music, \$80

(Boosey & Hawkes. <http://jwpepper.com>)

Narrated: Cowboy Life Part 2 (4'00")

Letter from XIT cowboy

(Music: cues)

ORCHESTRA: Deep In The Heart Of Texas (3'00")

Narrated: The Oil Boom (5'00")

Spindeltop Story, Howard Hughes Story

(Music: cues)

ORCHESTRA: Theme From "Giant" (3'00")

Narrated: Texas Humor/Politics (5'00")

(Music: cues)

ORCHESTRA: The Yellow Rose of Texas (4'30")

arr. Carmen Dragon (rental, <http://carmendragon.com>)

Narrated: Texas Culture (2'00")

Poem By Lawrence Wright and Marcia Ball

(Music: cues)

Narrated: Closing Remarks (1'00")

ORCHESTRA: The Hill Country Theme (3'30")

(Music: The Hill Country Theme)



A TEXAS TRIBUTE

Celebrating our 50th Anniversary Season

SAMPLE SHOW 2 (SHORT FUNDRAISER)

Entire Program (34 minutes)

ORCHESTRA: Hoedown from "Rodeo" (3'30")
Aaron Copland. Sheet music, \$80
(Boosey & Hawkes. <http://jwpepper.com>)

Introduction (1'00")
Bob & Kelli introduced
Walk-on (Music: Texas Country Reporter theme)

Opening welcome remarks

Narrated: Texas Revolution (7'30")
Texas Declaration of Independence, Sam Houston speech,
letters from the Alamo
(Music: Texas Revolution cues, Plano Fanfare)

Narrated: Texas Constitutions (3'00")
(Music: Texas Constitutions cues, attacca segue to Yellow
Rose)

ORCHESTRA: The Yellow Rose of Texas (4'30")
arr. Carmen Dragon (rental, <http://carmendragon.com>)

<APPLAUSE>

Narrated: Texas Culture (2'30")
(Music: cues)

ORCHESTRA: Texas, Our Texas (5'30")
arr. David Lovrien (provided in package)

Narrated: Texas Humor/Politics (3'00")
(Music: cues)

ORCHESTRA: The Hill Country Theme (3'30")
Closing remarks
(Music: The Hill Country Theme)



A TEXAS TRIBUTE

Celebrating our 50th Anniversary Season

CONTACT INFORMATION

Bob Phillips

Executive Producer

bob@phillipsproductions.com

Phone: (214) 766 - 6269

Mike Snyder

Senior Producer

mike@phillipsproductions.com

Kelli Phillips

Vice President/CFO

kelli@phillipsproductions.com

Phone: (409) 351 - 3151

Grace Lovrien

Dallas Winds Executive Assistant

grace@dallaswinds.org

Phone: (214) 565 - 9463



A TEXAS TRIBUTE

Celebrating our 50th Anniversary Season

NIELSEN TELEVISION MARKET RATINGS

| Rank | Market | TV Homes | % of US | Rating/Share | Homes Viewing |
|------|-------------------------------|-----------|---------|--------------|---------------|
| 5 | Dallas-Ft. Worth | 2,571,310 | 2.243 | 1/3 | 25,713 |
| 10 | Houston | 2,185,260 | 1.906 | 2/9 | 43,704 |
| 36 | San Antonio | 880,690 | 0.768 | 6/18 | 52,836 |
| 47 | Austin | 686,830 | 0.599 | 3/6 | 20,604 |
| 83 | Shreveport | 386,150 | 0.337 | 2/9 | 7,722 |
| 87 | Harlingen-Brownsville-McAllen | 361,820 | 0.316 | 1/19 | 3,618 |
| 88 | Waco-Temple-Bryan | 353,190 | 0.308 | 2/8 | 7,062 |
| 91 | El Paso-Las Cruces | 336,570 | 0.294 | 2/6 | 6,730 |
| 107 | Tyler-Longview-Lufkin | 271,400 | 0.237 | 9/25 | 24,426 |
| 129 | Corpus Christi | 203,550 | 0.178 | 1/4 | 2,035 |
| 130 | Amarillo | 195,650 | 0.171 | 3/12 | 5,868 |
| 141 | Beaumont-Port Arthur | 168,420 | 0.147 | 8/21 | 13,472 |
| 142 | Wichita Falls-Lawton | 160,540 | 0.140 | 2/6 | 3,210 |
| 143 | Lubbock | 160,160 | 0.140 | 5/28 | 8,005 |
| 151 | Midland-Odessa | 146,040 | 0.127 | 3/18 | 4,380 |
| 161 | Sherman-Ada | 128,790 | 0.112 | 1/2 | 1,287 |
| 164 | Abilene-Sweetwater | 115,630 | 0.101 | 2/9 | 2,312 |
| 185 | Laredo | 72,060 | 0.063 | 1/4 | 720 |
| 197 | San Angelo | 55,570 | 0.048 | 2/9 | 1,110 |
| 204 | Victoria | 31,540 | 0.028 | 1/12 | 315 |

Total 8.263 % of US 234,589 TV HH

Nationwide Syndication on RFD-TV

439,200 TV HH